



Product description

With remote driver / remote IP box - Round
Aluminium frame



Luminaire structure

- Die-cast aluminium housing
- Pre-treated before powder coating ensuring high corrosion resistance
- 6mm thick front ring in aluminium
- Single cable entry
- Stainless steel fasteners in grade 304 with zinc flake coating (ZFC)
- Durable silicone rubber gasket
- Clear toughened glass
- Remote driver (included)
- Remote box IP-rated is included for NIKON 3

Light symbol



VN

Product colour

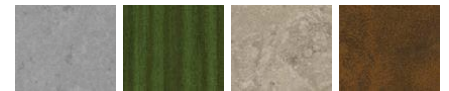


01- Black (RAL 9011) 02- Dark Grey (RAL 7043) 03- White (RAL 9003) 05- Matt Silver (RAL 9006)



06- Bronze (RAL 6014)

Special finishes upon request



SU01- Concrete Urban SU02- Softscape Urban SU03- Stone Urban SU04- Corten Urban



SW01- OAK Woodland SW02- Walnut Woodland SW03- PINE Woodland

Technical information

Light source	7 LED
Light source type	LED
Dimming type	DALI, On/Off
Material	Aluminium
Weight	2.3 kg
Operating temperature	-20°C to 40°C

Luminaire	
Power	33 W
Lumen	3091 - 3320 lm
Efficacy	94 - 101 lm/W
CCT / CRI	3000K CRI80, 4000K CRI80
Drive current	350 mA
Driver option	Remote driver (included)
Driver	Constant current (CC)
Input voltage	220-240 V 50/60 Hz

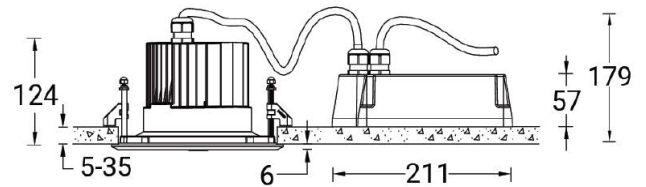
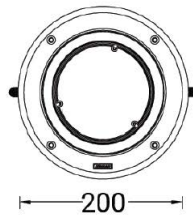
Optic	VN [8°]
MacAdam Ellipse	3 SDCM
Lifetime L90B10 (hrs)	109,000
Lifetime L80B10 (hrs)	109,000
Lifetime L80B50 (hrs)	109,000

NIKON 3 (NI-80525-A)

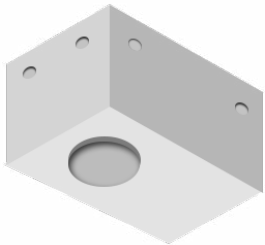
Product variants

HOW TO SPECIFY

LIGA	-	NI-80525-A	-	350	-	VN	-	8030	-	ND	-	01
		MODEL		OUTPUT		DISTRIBUTION		CRI/CCT		DIMMING		COLOUR FINISH
		NI-80525-A		350 33W		VN		8030		ND		01 BLACK
								8040		DALI		02 DARK GREY
												03 WHITE
												05 MATT SILVER
												06 BRONZE
												S - SPECIAL FINISH



Accessories



Concrete box modification upon request
LIGA-CONCRETE-BOX