

Product description

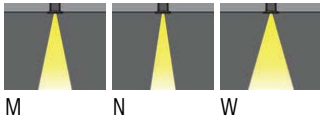
With remote driver / remote IP box - Round
Stainless Steel frame



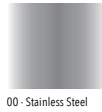
Luminaire structure

- Die-cast aluminium housing
- Pre-treated before powder coating ensuring high corrosion resistance
- 6mm thick front ring in stainless steel
- Single cable entry
- Stainless steel fasteners in grade 304 with zinc flake coating (ZFC)
- Durable silicone rubber gasket
- Clear toughened glass
- Remote driver (included)
- Remote box IP-rated is included for NIKON 3

Light symbol



Product colour



Technical information

Light source	18 LED
Light source type	LED
Dimming type	DALI, On/Off
Material	Stainless Steel
Weight	2.6 kg
Operating temperature	-20°C to 40 °C

Luminaire	
Power	29 W
Lumen	2689 - 3144 lm
Efficacy	93 - 108 lm/W
CCT / CRI	3000K CRI80, 4000K CRI80
Drive current	1050 mA
Driver option	Remote driver (included)
Driver	Constant current (CC)
Input voltage	220-240 V 50/60 Hz

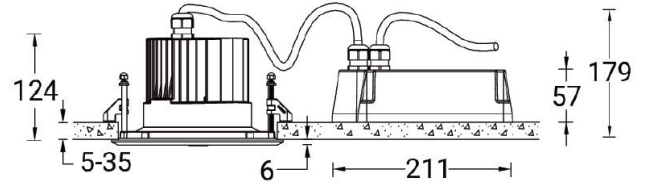
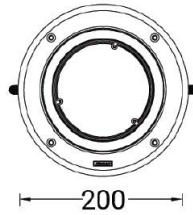
Optic	M [27°], N [15°], W [44°]
Bug	B3-U0-G0, B2-U0-G0
ULR	0%
ULOR	0%
CIE flux code n°3	100
MacAdam Ellipse	3 SDCM
Lifetime L90B10 (hrs)	120,000
Lifetime L80B10 (hrs)	120,000
Lifetime L80B50 (hrs)	120,000

NIKON 3 (NI-80521-S)

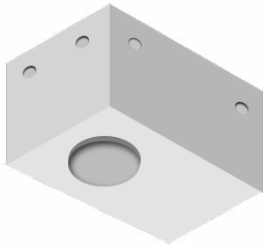
Product variants

HOW TO SPECIFY

LIGA	-	NI-80521-S	-	1050	-	M	-	8030	-	ND	-	00
		MODEL		OUTPUT		DISTRIBUTION		CRI/CCT		DIMMING		COLOUR FINISH
		NI-80521-S		1050 29W		M		8030		ND		00 STAINLESS STEEL
						N		8040		DALI		
						W						



Accessories



Concrete box modification upon request
LIGA-CONCRETE-BOX