



Product description

With remote driver / remote IP box - Round
Aluminium frame



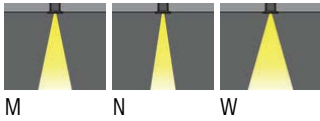
Luminaire structure

- Die-cast aluminium housing
- Pre-treated before powder coating ensuring high corrosion resistance
- 6mm thick front ring in aluminium

- Single cable entry
- Stainless steel fasteners in grade 304 with zinc flake coating (ZFC)
- Durable silicone rubber gasket

- Clear toughened glass
- Remote driver (included)
- Remote box IP-rated is included for NIKON 3

Light symbol



M

N

W

Product colour



01- Black
(RAL 9011)

02- Dark Grey
(RAL 7043)

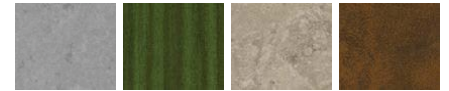
03- White
(RAL 9003)

05- Matt Silver
(RAL 9006)



06- Bronze
(RAL 6014)

Special finishes upon request



SU01- Concrete
Urban

SU02- Softscape
Urban

SU03- Stone
Urban

SU04- Corten
Urban



SW01- OAK
Woodland



SW02- Walnut
Woodland



SW03- PINE
Woodland

Technical information

Light source	24 LED
Light source type	LED
Dimming type	DALI, On/Off
Material	Aluminium
Weight	2.3 kg
Operating temperature	-20°C to 40°C

Luminaire	
Power	39 W
Lumen	3794 - 4303 lm
Efficacy	97 - 110 lm/W
CCT / CRI	3000K CRI80, 4000K CRI80
Drive current	1000 mA
Driver option	Remote driver (included)
Driver	Constant current (CC)
Input voltage	220-240 V 50/60 Hz

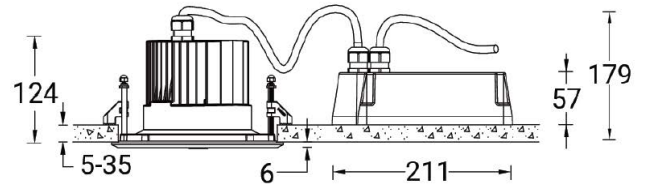
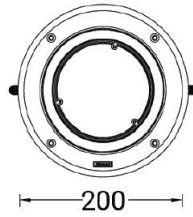
Optic	M [26°], N [15°], W [45°]
MacAdam Ellipse	3 SDCM
Lifetime L90B10 (hrs)	120,000
Lifetime L80B10 (hrs)	120,000
Lifetime L80B50 (hrs)	120,000

NIKON 3 (NI-80523-A)

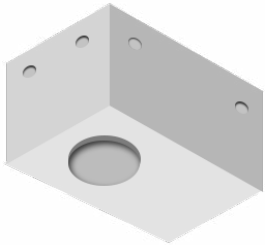
Product variants

HOW TO SPECIFY

LIGA	-	NI-80523-A	-	1000	-	M	-	8030	-	ND	-	01
MODEL	OUTPUT	DISTRIBUTION	CRI/CCT	DIMMING	COLOUR FINISH							
NI-80523-A	1000.39W	M	8030	ND	01 BLACK							
		N	8040	DALI	02 DARK GREY							
		W			03 WHITE							
					05 MATT SILVER							
					06 BRONZE							
					S - SPECIAL FINISH							



Accessories



Concrete box modification upon request
LIGA-CONCRETE-BOX