

## Product description

With remote driver / remote IP box - Round  
Aluminium frame



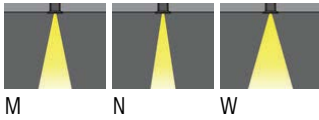
## Luminaire structure

- Die-cast aluminium housing
- Pre-treated before powder coating ensuring high corrosion resistance
- 6mm thick front ring in aluminium

- Single cable entry
- Stainless steel fasteners in grade 304 with zinc flake coating (ZFC)
- Durable silicone rubber gasket

- Clear toughened glass
- Remote driver (included)
- Remote box IP-rated is included for NIKON 3

## Light symbol



M

N

W

## Product colour



01- Black  
(RAL 9011)

02- Dark Grey  
(RAL 7043)

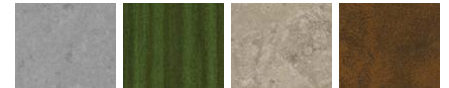
03- White  
(RAL 9003)

05- Matt Silver  
(RAL 9006)



06- Bronze  
(RAL 6014)

## Special finishes upon request



SU01- Concrete  
Urban

SU02- Softscape  
Urban

SU03- Stone  
Urban

SU04- Corten  
Urban



SW01- OAK  
Woodland



SW02- Walnut  
Woodland



SW03- PINE  
Woodland

## Technical information

Light source	18 LED
Light source type	LED
Dimming type	DALI, On/Off
Material	Aluminium
Weight	2.3 kg
Operating temperature	-20°C to 40°C

Luminaire	
Power	29 W
Lumen	2689 - 3144 lm
Efficacy	93 - 108 lm/W
CCT / CRI	3000K CRI80, 4000K CRI80
Drive current	1050 mA
Driver option	Remote driver (included)
Driver	Constant current (CC)
Input voltage	220-240 V 50/60 Hz

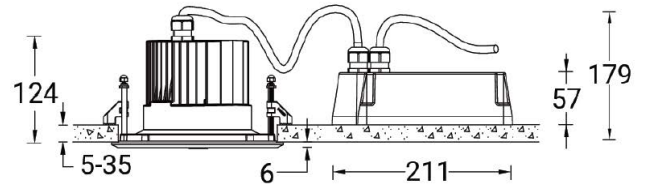
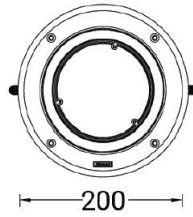
Optic	M [27°], N [15°], W [44°]
MacAdam Ellipse	3 SDCM
Lifetime L90B10 (hrs)	120,000
Lifetime L80B10 (hrs)	120,000
Lifetime L80B50 (hrs)	120,000

**NIKON 3 (NI-80521-A)**

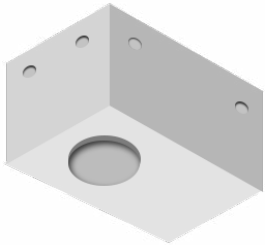
**Product variants**

**HOW TO SPECIFY**

LIGA	-	NI-80521-A	-	1050	-	M	-	8030	-	ND	-	01
MODEL	OUTPUT	DISTRIBUTION	CRI/CCT	DIMMING	COLOUR FINISH							
NI-80521-A	1050 29W	M	8030	ND	01 BLACK							
		N	8040	DALI	02 DARK GREY							
		W			03 WHITE							
					05 MATT SILVER							
					06 BRONZE							
					S - SPECIAL FINISH							



**Accessories**



Concrete box modification upon request  
LIGA-CONCRETE-BOX